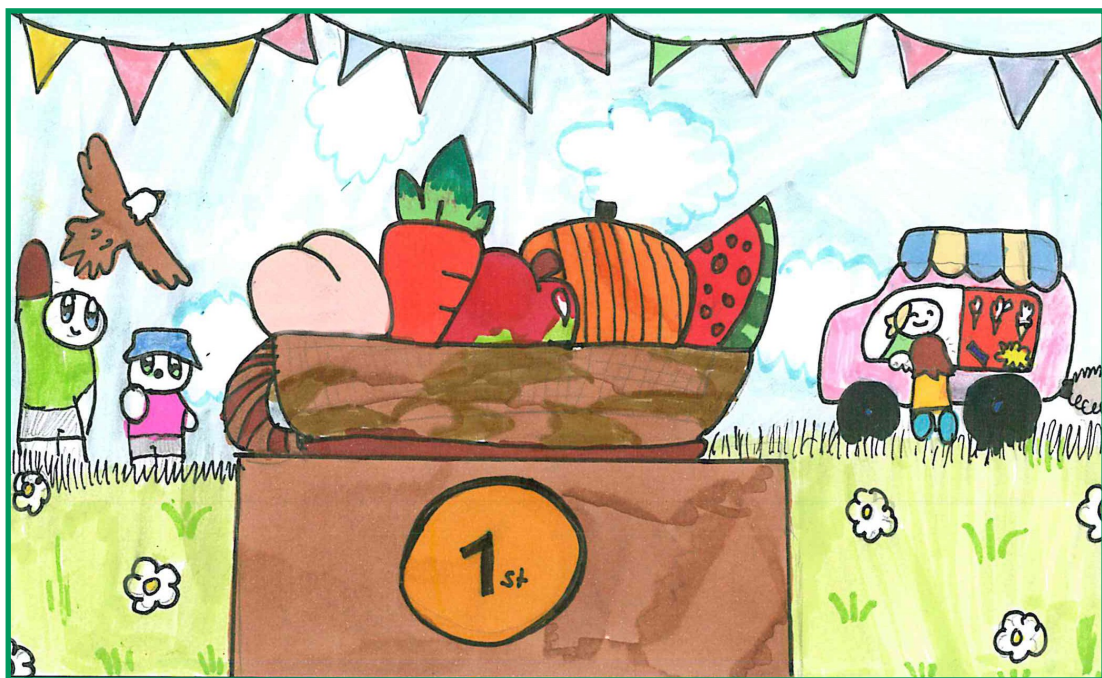


WANBOROUGH VILLAGE & COUNTRY SHOW 2025

Saturday 16th August 2025

12 noon to 6pm



Entry Fee - Adults £7 / Concessions £4 / Children £4 / Children under 5 FREE / Parking £2

Purchase tickets on the day / Cash & Card payments accepted on the gates



**WANBOROUGH
SHOW SOCIETY**

"For Community & Local Heritage"
www.wanboroughshow.org

A great family day out

Chappells

ESTATE AGENTS

Est.1986

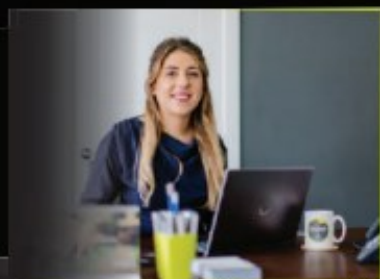
Sales • Lettings • New Homes • Mortgages

*Our new home
to help you
find yours...*

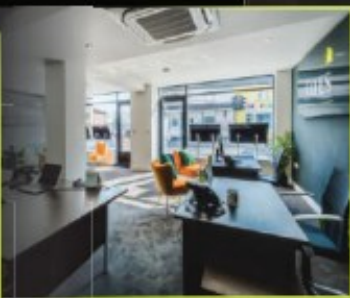
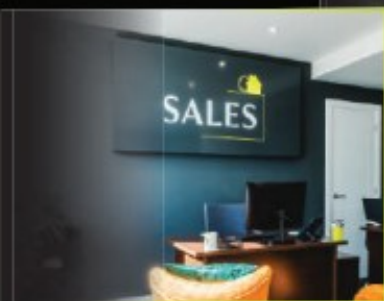
LETTINGS

*Town & Village specialists -
experience others envy*

*Contact us now to arrange
your free valuation...*



LETTINGS



01793 618080



sales@chappells.uk.com



lettings@chappells.uk.com



Our Chairman's Annual Address



**WANBOROUGH
SHOW SOCIETY**



Front Cover Competition

We, on the Wanborough Show Committee, are very proud to offer the annual cover competition out to the children of Wanborough Primary school.

The committee decide on a topic for the cover competition; this year was “Fruit, Vegetables and Flowers of the Green Tent”. We ask the children to design a beautiful and eye-catching front cover for our programme and they never disappoint.

We receive a great quantity of stunning designs which the committee blindly judge (all names and ages are on the back of designs). We are thrilled to notice that budding artists bloom through the years and often progress from runner up to year group winner and sometimes even win the grand prize.

The runner-up entries are put onto a beautiful Thank You card which goes to the judges of our competition classes and categories. The year group winners are featured on the inside of the show programme. And of course, the overall winner gets pride of place on the front cover.

The children are celebrated in an in-school assembly where they receive certificates and a prize mug with the featured design for the overall winner.

We are very grateful to Wanborough Primary School for their continued support and the children’s beautiful work in keeping our wonderful village show alive. Thank you.

Overall Winner



Evie Bell

Best in the year



Reception - Emily O' Leary



**WANBOROUGH
SHOW SOCIETY**



Best in the year - Continued



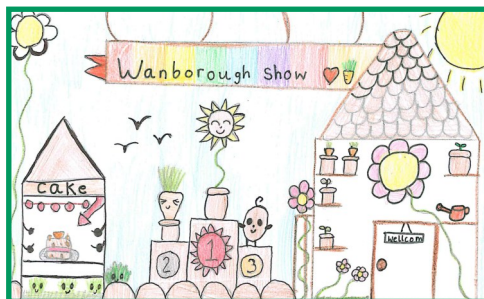
Year 1 - Genevieve Pittock



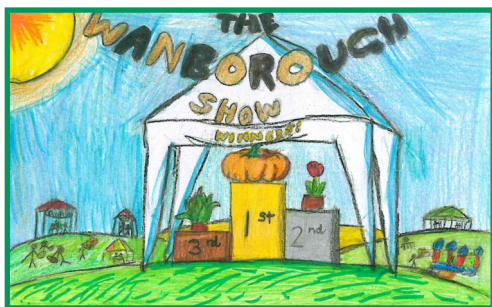
Year 2 - Freya Kent



Year 3 - Isabelle Swinburn



Year 4 - Amelie Smith



Year 5 - Kupa Kujeke



Year 6 - Daisy Offen

Vacancies

We currently are looking for stylists to join us on a chair rental basis either full or part time, in this friendly salon that has been established under the same ownership for over 40 years. Also room rental available upstairs to other complementary and alternative therapies including, counselling, beauty, hair systems etc Please contact us via email if you wish to consider joining us

7 High Street, Chiseldon, Wilts, SN4 0NQ

lynda@hairandtrichology.co.uk



Cameo Hair Salon is a well established rural, friendly salon offering a fair pricing policy that rewards us with a diverse range of clients. Also providing a well-established wig service to NHS and private patients in Swindon, Chippenham and Bath. We also offer an in house Award winning Trichology Clinic with 25 yrs of supporting those suffering with hair loss and scalp conditions.

cameo-hair.co.uk

01793 740147

hairandtrichology.co.uk

01793 741136



Adults **£7** / Concessions **£4** / Children **£3** / Children under 5 **FREE**

Parking **£2** / Family Ticket **£20** (2 adults & 2 children)

Purchase tickets on the day / Cash & Card payments accepted

Join us for a fun family day out



**WANBOROUGH
SHOW SOCIETY**



Contents Page

| | Page |
|-----------------------------------|-------|
| Flower & Produce Show Rules | 8 |
| Flower & Produce Exhibitors Notes | 9 |
| Flower & Produce Special Awards | 11 |
| Flower & Produce Classes | 12-19 |
| Flower & Produce entry form | 21 |
| Public Notices | 23 |
| Showground map | 26-27 |
| Children's Classes | 29-32 |
| Children's entry form | 33 |
| Main Arena events | 34-37 |
| Show Day Entertainment | 38-41 |
| Classic Vehicle Display | 42-43 |
| Trade Stands | 44-45 |
| Wanborough Show Raffle | 46-47 |
| Companion Dog Show | 48-49 |

Great Family Day Out



Children's Section



Football Darts



Vehicle Display

With thanks to all our sponsors



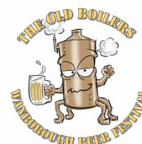
Main arena sponsor



Climbing Wall



Raffle



Helter Skelter



Dog Show



**WANBOROUGH
SHOW SOCIETY**

"For Community & Local Heritage"
www.wanboroughshow.org

Flower & Produce Show Rules

1. The Judges decision shall be final
2. Only one named exhibitor per entry
3. One entry only per person per class
4. All classes are open to all but "Special Awards" are restricted to residents within the parishes of Wanborough, Hinton Parva, Liddington and Bishopstone, (with the exception of a special award for the highest points for a non-resident).
5. The Exhibitor must have grown the produce, with exception of the Floral Art Classes.
6. **Entry will close at 22.00 on Thursday 14th August 2025. No entries will be taken after that time.**
7. All exhibits to be staged between 8.30am and 10.30am on show day, after which time the marquee will be closed for judging until 2pm.
8. Entries into Flower and Produce tent will be FREE this year.
9. The Show Society shall not be responsible for loss or damage to exhibits, vases or containers.
10. Any protest should be made to the Flower and Produce Secretary before 14.30.
11. No prize money

Unless otherwise stated in the schedule, the rules containing in the Horticultural Show Handbook 2016 shall apply.

Presentation of Main Awards will be in the "Flower & Produce Tent" at 16.00, please would prize winners be available at this time. Exhibits and be collected from 17.00, please leave them for everyone to view until 17.00.

Exhibits remaining at 17.30 will be auctioned in the Beer Tent. The committee extends its grateful thanks to those exhibitors who leave their produce for the auction.



Exhibitors' Notes

3 Easy Steps On How to Enter

1. Plan

Study the programme schedule of classes and decide which classes you would like to enter.

Complete the Entry Form on page

2. Enter

Send, drop off, or email the entry form to the addresses on the form before the closing date on 14th August 2025

3. Stage

Bring along your exhibit(s) to the marquee between 8.30 and 10.30 on Show Day (16th August), allowing yourself time to stage your produce or exhibit(s).

On arrival at the marquee register your name with the "Meet and Greet" Team who will give you your entry number to display on your exhibit(s).

Stewards will be on hand to help and give you advice if needed.

Return later, to enjoy the Show which opens at 12 noon, once judging is complete the Flower & Produce tent will open for you to see whether you have a prize card beside your exhibit(s).

Please leave your exhibit(s) on display in the tent until 17.00 so that everyone at the show can enjoy viewing them. You can then collect your produce & exhibit(s) from 17.00.

Any produce & exhibits remaining at 17.30 will be entered into the Produce Auction in the Beer Tent.

Post entry forms to:-

Sue Ripley—1 Palmers Way, Wanborough SN4 0BE

E-mail entries:- sueripley58@hotmail.com (no entry fees to pay)

Entry Form on page 21

FREE ENTRY



**WANBOROUGH
SHOW SOCIETY**




PRIMARY
HOMES & LETTINGS

WE 
WANBOROUGH

**Sell your
Home**


for just **1%** TVAT



Recent properties **sold** and **let** in **Wanborough**
by **Primary Homes and Lettings**

LET



**Let your
Property**


for just **10%** TVAT

Contact us today to
arrange a **FREE** valuation

01793 641 641

info@primaryhomesandlettings.co.uk | primaryhomesandlettings.co.uk
101 Commercial Road, Swindon, Wiltshire, SN1 5PL



Flower & Produce Show Special Awards



Award

Loveday & Loveday Perpetual Challenge Cup

Jack Newson Perpetual Challenge Cup

Greatfield Nurseries Cup

N. J. Dowden Perpetual Challenge Plate

Wanborough Herb Nursery Perpetual Challenge Cup

Ashley Roberts Perpetual Challenge Cup

F. R. Payne Memorial Cup

C. J. Hymers Perpetual Challenge Cup

Roy Kent Memorial Challenge Cup

Jean Kent Plate

J.R. Bell Perpetual Challenge Cup

Trish Emms Perpetual Challenge Plate

St Andrews Flower Club Trophy

Wanborough Show Cookery Challenge Shield

Church Meadow Perpetual Challenge Cup

Wanborough Cake Challenge Trophy

Jubilee Perpetual Challenge Trophy

Criteria for the award

Highest Points in Sections A, B & C

Second Highest in Sections A, B & C

Best exhibit in sections A, B & C

Best Vegetable in Show

Best Herb Collection in Show

Best Flower in Show

Best Roses or Sweet Peas

Best Dahlia Exhibit

Highest points in Section C

Best Vase of Perennial Flowers

Best Exhibit from New Exhibitor

Best Exhibit in Cookery

Best Exhibit in Floral Art

Highest Points in Cookery

Second Highest Points in Cookery

Best Fruit Cake in Cookery

Best Exhibit in Arts & Crafts - Classes 86



**WANBOROUGH
SHOW SOCIETY**



Section A - Vegetables

Judges of section: Jane & Matthew

NB: Please note ONE entry per person per class

| Class | Quantities |
|--|-----------------------|
| 1. Runner Beans | 9 |
| 2. Longest Runner Bean | 1 |
| 3. Curliest Bean | 1 |
| 4. Basket or Trug of mixed Vegetables | Any number or variety |
| 5. Beet (round) | 3 |
| 6. Radishes | 6 |
| 7. Carrots, (Long or Intermediate—Tops removed to approx. 7cm) | 3 |
| 8. Courgettes | 3 |
| 9. Cucumbers, (Frame or Ridge) | 2 |
| 10. French Beans | 6 |
| 11. Garlic | 2 |
| 12. Onions, (Tops removed, max 250g each) | 5 |
| 13. Onions, (Tops removed over 250g each) | 3 |
| 14. Shallots, (Giant) | 9 |
| 15. Shallots, (Pickling) | 9 |
| 16. Spring Onions | 6 |
| 17. Peppers, (Chilli) | 3 |
| 18. Peppers, (Sweet) | 2 |
| 19. Potatoes (Coloured) | 5 |
| 20. Potatoes, (White) | 5 |
| 21. Heaviest Potato | 1 |
| 22. Squash / Pumpkin | 1 |
| 23. Sweetcorn | 2 |
| 24. Tomatoes | 6 |
| 25. Tomatoes, (Cherry or Patio) | 6 |
| 26. Any Other Vegetable not mentioned above | 3 |



**WANBOROUGH
SHOW SOCIETY**



| Class | Quantities |
|-------------------------|------------|
| 27. Heaviest Marrow | 1 |
| 28. Collection of Herbs | 5 |
| 29. Rhubarb | 3 |

Hints and Tips for Vegetable showing

- Harvest your entries as close to show day as possible for maximum freshness, except for garlic, onions or shallots; alliums need time for the skins to dry. Cucumbers do gain extra points if the flower is still attached.
- There's lots of advice online about "staging", or presenting you vegetables, but don't forget that we use the RHS Horticultural Show Handbook. Check with Sue Ripley if you don't have a copy

Section B - Fruit

Judges of section: Jane & Matthew

| Class | Quantities |
|------------------------|------------------------------------|
| 30. Apples - (Cooking) | 6 |
| 31. Apples - (Dessert) | 6 |
| 32. Soft Fruit | Approx. 250g |
| 33. Any other Fruit | Dish of any kind staged for effect |

Hints and Tips for Fruit showing

- Do not remove the bloom, and don't polish fruit for exhibition.
- Ideally display fruit with stalks still attached

Post entry forms to:-

Sue Ripley—1 Palmers Way, Wanborough SN4 0BE

E-mail entries:- sueripley58@hotmail.com (no entry fees to pay)

Entry form on page 21

FREE ENTRY



**WANBOROUGH
SHOW SOCIETY**

"For Community & Local Heritage"
www.wanboroughshow.org

Section C - Flowers

Judges of section: Peter Biggs

| Class | No. of Stems |
|---|-----------------------------------|
| 34. Annuals, "Jewel of the garden", bright and beautiful colours. Grown from seed within the last 12 months | 3 cultivars, 1 vase of 9 stems |
| 35. Asters | 6 blooms |
| 36. Marigolds, French | 6 blooms |
| 37. Dahlias, (Cactus / semi cactus) | 1 cultivator, 3 blooms |
| 38. Dahlias, (Po,-pom) Max size 50mm | 1 cultivator, 3 blooms |
| 39. Dahlias, Any other | 1 cultivator, 3 blooms |
| 40. Gladioli, (Large flowered) | 1 cultivator, 3 blooms |
| 41. Hydrangea (may have 2 blooms per stem) | 3 stems |
| 42. Agapanthus | 3 |
| 43. Hardy Herbaceous Perennials in bloom | 3 cultivators, 1 vase of 10 stems |
| 44. Phlox | 1 cultivator, 3 blooms |
| 45. Pinks | 6 stems |
| 46. Rose Hybrid T | 1 bloom |
| 47. Roses, any cluster flower type | 3 stems from 1 cultivator |
| 48. Miniature Rose | 1 cultivator, 3 blooms |
| 49. Best flower in the garden this morning | 1 |
| 50. Sweet Peas | 10 |

Hints and Tips from the judge for showing Flowers

- Please read the schedule carefully, and display the correct number of stems/blooms
- Generally, a "Herbaceous Perennial" flowers every year, has fresh green stems, which die back to ground level in the winter. A shrub grows every year, but has woody stems which don't die back.
- An Annual is a plant that grows from seed for a single year.



**WANBOROUGH
SHOW SOCIETY**



Section C - Pot Plants

| Class | | Quantities |
|-------|---|------------|
| 51. | Cacti or Succulent (Max. pot size 26cm) | 1 |
| 52. | Foliage Pot Plant | 1 |
| 53. | Fuchsia - Single or double (Max. pot size 26cm) | 1 |
| 54. | Geranium or Pelargonium - Any cultivar (Max. pot size 26cm) | 1 |
| 55. | Flowering Pot Plant | 1 |

Section C - Pot Plants

Judge: Mr Steve Ramsay

- Class**
- 56. Hanging Basket or Planter (the container should not be bigger than 75cms square or diameter), or Window Box (not more than 2 meters long), holding a minimum of 3 cultivators or species of plant. This will be judged in situ Thursday 14th. No need to bring up to the show ground.
 - 57. Tallest Sunflower. Grow a giant sunflower from seed and we will come and measure it on the Thursday 14th August before the show.



Section D - Floral Art

Judge: Jean Nash

Class

- 58. Timeless Charm, incorporating a Clockface - 25cm high x 25cm deep x 25cm wide
- 59. Beauty without Flowers in container of Choice - 50cm High 40cm Deep 50cm Wide
- 60. Centrepiece in Red White & Blue to celebrate - 15cm High 30cm Deep 30cm Wide
- 61. Standing Tall - Height Optional 20cm Deep 20cm Wide
- 62. From the Potting Shed Terracotta Pot as your container - Height Optional 20cm Deep 20cm Wide
- 63. Mother of the Bride Corsage

Hints and Tips from the Floral Art judge

- An “exhibit” is composed of natural plant material with or without accessories, contained within a space as specified in the show schedule.
- Backgrounds, bases, containers, drapes, exhibit titles and mechanics may always be included in an exhibit unless otherwise stated.
- More than one placement may always be included unless otherwise stated.
- In all exhibits natural plant material must predominate.
- Artificial plant material, including artificial fruit is not allowed.
- Natural plant material is either growing fresh, dried or preserved, i.e flowers and foliage.
- Flowers do not need to have been grown by the exhibitor.
- Take care to ensure display is within the dimensions stated.

Post entry forms to:-

Sue Ripley—1 Palmers Way, Wanborough SN4 0BE

E-mail entries:- sueripley58@hotmail.com (no entry fees to pay)



Section E - Cookery

Judges of section: Savoury & Sweet Dishes: Toby Ridler. Jam & Marmalade: Jenny Yallop.

Wines, Beers & Liqueurs: Dave Lockwood

| Class | Quantities |
|--|------------|
| 64. Bread - Specialist Loaf or Rolls | 1 or 6 |
| 65. Sausage rolls (meat or plant based) | 6 |
| 66. Quiche - no larger than 24cm | 1 |
| 67. Savory Scones | 6 |
| 68. Scotch Egg | 2 |
| 69. Chutney or Piccalilli | 1 jar |
| 70. Pickled or preserved vegetables or fruit | 1 jar |
| 71. Jam or jelly (made in last 12 months) | 1 jar |
| 72. Citrus curd | 1 jar |
| 73. Marmalade (any citrus, made in last 12 months) | 1 jar |
| 74. Honey | 1 jar |
| 75. Home-made wine, cordial, beer, cider or perry | 1 bottle |
| 76. Fruit liqueurs e.g. Sloe/Rhubarb gin (made with vodka, gin or brandy of 20% ABV) | 1 bottle |
| 77. Pressed Fruit Juice | 1 bottle |
| 78. Fruit Cake - no larger than 23cm diameter (see Special Awards) | 1 |
| 79. Victoria Sandwich - 3 egg mixture. Jam only for filing | 1 |
| 80. Fruit Pie (double crust), no larger than 23cm diameter | 1 |
| 81. Shortbread Fingers | 6 |
| 82. Flapjacks | 6 |
| 83. Battenberg | 1 |
| 84. Pastel De Nata | 4 |
| 85. Carrot Cake | 1 |
| 86. Gluten Free Bakewell Tarts | 6 |

Hints and Tips from the Cookery judges

- Flavour, presentation, consistency and texture are the criteria used for judging
- It is really helpful to add a description label.
- We can't control the temperature in the Flower and Produce Tent. Please be aware of this when serving food which has been in the tent for some time. Be particularly wary of using fresh cream for decoration.



**WANBOROUGH
SHOW SOCIETY**

"For Community & Local Heritage"
www.wanboroughshow.org



Luscious Lotmead Strawberries

Open daily 9.30 am - 5.00 pm
From May to Christmas



PYO

Pick Your Own fruit
and vegetables all
summer long.

Farm Park

Meet our friendly
animals and enjoy
the large outdoor
play area.

Cafe & Shop

Teas, coffees and
light snacks served
during the picking
season

For more information:-

Visit our website www.lotmead.co.uk

**Follow us on Facebook and Instagram @lotmeadfarm
or call us on 01793 790137 (24hrs)**



Nationwide
PROPERTY LETTINGS

Nationwide Property Lettings

Probably the most competitive fees of any
experienced letting agent you will find
(and we are from Wanborough).

In lettings, it's all about the detail
- and we get it right!

Call us on 01793 513130 or visit us at:
www.nationwidepropertylettings.com



Section F - Arts & Crafts

Judges of section: Sue Dent

Judge of Photography - Barbara Lockwood

Class

87. Art, any drawing or painting (oils, water, pastels, sketching crayons)
88. Art, an 3D work (ceramics, sculpture, woodcarving)
89. Needlework, (e.g. cross stitch, tapestry, embroidery, patchwork, quilting, applique)
90. Mosaics
91. Any crocheted or knitted item (jumper, hat, scarf, post box topper)
92. Beadwork or jewellery
93. Any other craft
94. A handmade sewn garment for child or adult
95. Handmade Birthday Card
96. Photo: Purple
97. Photography: Humourous (with caption) - max size 30 x 30cm
98. Photography: Seaside Scene- max size 30 x 30cm
99. Photography: A Silhouette

Hints and Tips from the Arts & Craft judges

- Please add an explanation card to help the judge understand the skill involved and whether a kit has or has not been used.
- Ensure you cover any signatures on artwork or any other exhibits.
- Please let Sue Ripley know if you have a large piece of artwork to exhibit so we can allow plenty of space in the tent,



Barrett

Accounting and Tax Services



SELF ASSESSMENT TAX
RETURNS • TAX ADVICE

COMPANY, SOLE TRADE AND
PARTNERSHIP ACCOUNTS
• BOOK-KEEPING

PAYE • VAT

If you want service that gives value for money,
whilst being professional and efficient,
contact us on

01793 741250 or mail@barrett-ats.co.uk
for a free initial discussion

*Pleased to be supporting
The Wanborough Summer Show*



Monarch Roofing specialise in slating, traditional Cotswold stone and lead. We pride ourselves in offering a professional service on any size contract where personal attention, health and safety and quality of work are paramount.

LEADWORK • COTSWOLD STONE ROOFING • SLATING & TILING

W: www.monarchroofing.co.uk **T:** 01793 485623 **E:** office@monarchroofing.co.uk

Entry Form

[illegible]

Name:

Address:

Contact Number:

Please tick if eligible for the:
New Exhibitor

11

Send entry forms to:

Sue Ripley

1 Palmers Way, Wanborough

E-mail forms to:

sueripley58@hotmail.com

By 10pm on Thursday 14th August 2025

Please provide postal address/postcode

For email entries, for consideration of Special Awards.

NOTE: FREE ENTRY

Please do share any ideas and suggestions for new classes for next year by e-mailing: sueripley58@hotmail.com

If you would like to enter more classes, please continue on paper, or spreadsheet for email entries



**WANBOROUGH
SHOW SOCIETY**



*Please keep dogs on
a lead at all times*

Public Notices

Photography

On the day we usually have several photographers and videographers capturing show memories, these images and videos may be used for marketing and promotional material for future shows. If you don't want your image to be used please let the photographer know on the day. If there are any images with children in we will try to obtain the parent's permission to use these images.

If you would like to share your photos please do, you can either send them to us at info@wanboroughshow.org or share them on our facebook page.

Vehicles (Display and General)

The show field is a busy place especially on show day. The show involves people, animals and vehicles of all types. We would like to remind people to take as much care as they would do on a busy road. In fact please take even more care!

This basic rule applies to drivers too of course. Please anticipate the unexpected and always keep to the speed limit which for all parts of the show fields, the entrances and exits is DEAD SLOW at all times!

- Please take as much care as you would do on a busy road
- Please anticipate the unexpected
- Please keep to the speed limit which is DEAD SLOW at all times!

Thank you for helping keep a safe environment

Showground Safety

The commentary tent at the side of the Main Arena is the main point of contact for any emergencies, lost children and lost property.

Please be aware of moving vehicles at the entrances, in the car parks and especially when the Vehicle Parade enters the Main Arena.

Please follow any directions given by one of our stewards/marshalls, who will be clearly identifiable in the Wanborough Show Society hi-viz vest.

Smoking is not permitted in any tent or marquee. Sand buckets are provided at each marquee entrance for safe disposal. If a fire is discovered raise the alarm and dial 999 (SN4 ODA)

First Aid is provided and can be found in a gazebo next to the Main Arena and Community Tent.

Dogs must be kept on a lead at all times.



**WANBOROUGH
SHOW SOCIETY**



*Please keep dogs on
a lead at all times*

SELEXA

LIFE SCIENCES

PART OF SELEXA | GROUP

Selexa Life Sciences is a multi-discipline Headhunting and Exec-Search firm,
partnering with innovators to improve patient healthcare

CDMO

MEDICAL DEVICES

PHARMACEUTICAL

THERAPEUTICS

DRUG DELIVERY

NHS

CLINICAL

HEALTHCARE



Selected excellence
empowering healthcare



Trusted Partners

We earn the trust placed in us by our candidates and clients, holding ourselves to the highest standards whilst working seamlessly in collaboration.



Relentlessly Innovative

We are laser-focused on achieving our goals, proactive yet considered in our approach. We are dedicated to finding new ways to exceed expectations and maintain our unrivalled expertise.



Empathetic Specialists

With a core set of skills, our sector specific team have acute awareness. We see what you see. We understand there is a need to provide world-changers with successful solutions, to solve a variety of needs within healthcare.

Schedule of Events

Showground opens to the public at midday

Main Arena Schedule

| Time | Event |
|---------|---|
| 12 Noon | 3 Piece steel drum band |
| 12.30 | Historic Car Display |
| 13.00 | Bob Hogg's Sheepdog Show |
| 13.30 | The Lamb National |
| 14.00 | Morris Dancers |
| 14.30 | The Mighty's Smith Show |
| 15.00 | Razmatazz, plus children's presentation |
| 15.30 | Motorbikes |
| 16.00 | Bob Hogg's Sheepdog Show |
| 16.30 | The Lamb National |
| 17.00 | The Mighty Smith Show |

Other events

- Around 14.00** Flower & Produce and Children's Tent will open for viewing once judging has been completed
- 15.30** In front of Green Tent - Flower & Produce Presentation of awards
- 17.30** Produce Auction - In the Beer Tent

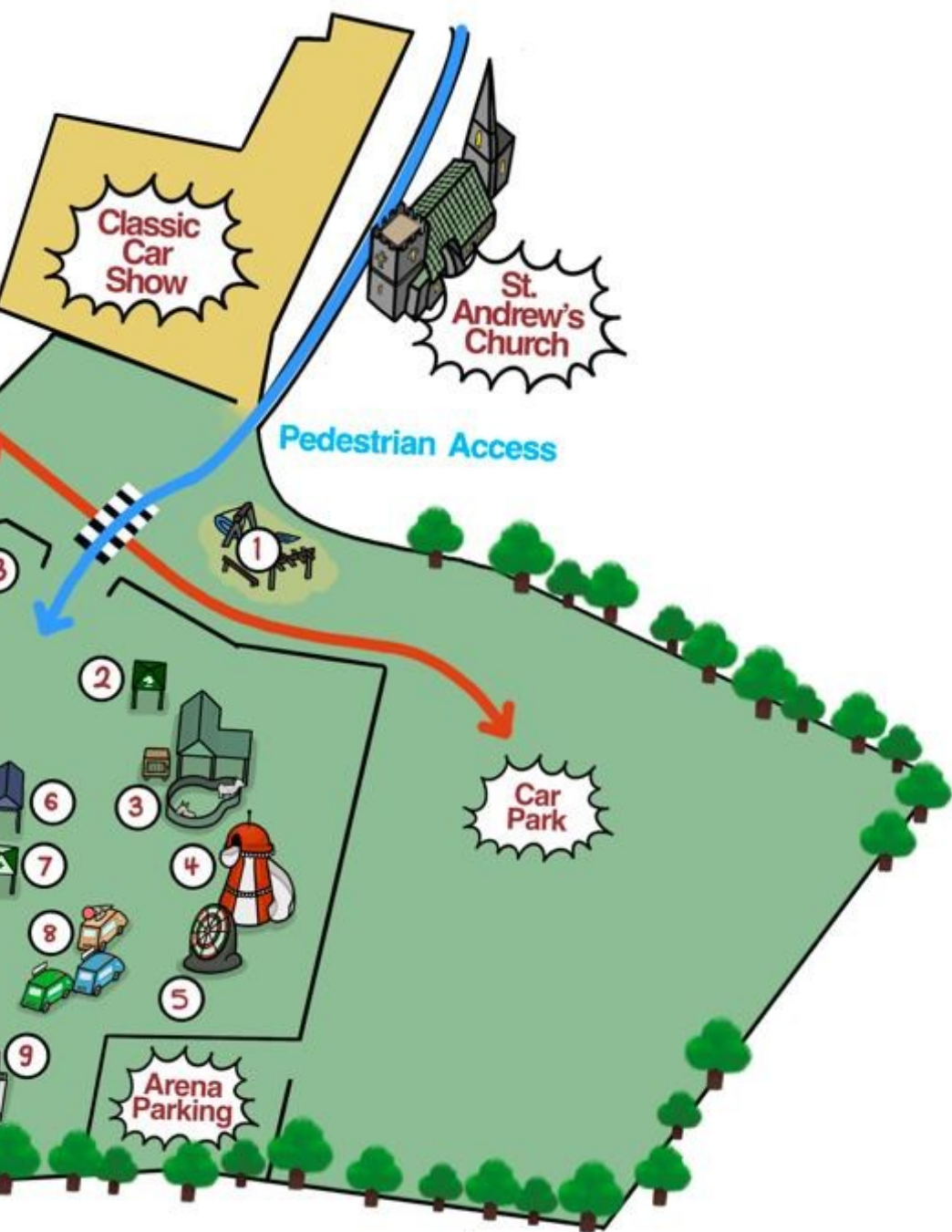


**WANBOROUGH
SHOW SOCIETY**

"For Community & Local Heritage"
www.wanboroughshow.org

Showground Map







Sponsored by

Children's Show

See page 33 for entry form

Children's Classes are all **FREE** to enter

Prizes - Certificates & Awards

Sponsored by:



Children's Show Rules

Judges: TBC

Rules:

1. Names to be attached or written on the REVERSE side of entry.
2. Age only to be indicated on the side of the exhibit.
3. Only one entry per child, per category please. Entries should be entirely the own work of the named exhibitor.
4. A child may enter any age category in their year group or higher. All children may enter the Under 18's categories. Children must not enter categories that are below their age/ year group.
5. Please adhere to schedule rules in order to avoid the disappointment of disqualification.

Awards:

Perpetual Challenge Cups:

- Highest Points 0 years- reception
- Highest Overall Points Key Stage 1
- Highest Points Early Key Stage 2
- Highest Points Late Key Stage 2
- Highest Points 11+
- Highest Points Under 18's
- Shield for Highest Points Overall
- The Janine Brown Award for Effort and Participation in the Wanborough Show

Post entries to:

28 Warneage Green, Wanborough (B Hoyer address)

Enquiries:

Beth Hoyer 07716344996

Email entries to:



**WANBOROUGH
SHOW SOCIETY**

"For Community & Local Heritage"
www.wanboroughshow.org



**WANBOROUGH
SHOW SOCIETY**



Children's Show

Baby - Reception

Class

1. **Cardboard/Paper Bugs-** make a lovely looking insect from paper or card. You could use paper plates or scraps of cardboard to create an interesting minibeast.
2. **Fingerprint farm-** Use your hands and fingers to create an exciting farm scene with all your favourite farm animals.
3. **Flower Biscuits-** decorate biscuits to look like a beautiful flower or garden scene. 3 biscuits allowed to be submitted per entry.

Key stage 1- Years 1 & 2

4. **Make a model animal-** use playdough, clay or fimo clay to create a delicious a model of an animal.
5. **Superhero armour-** use any materials , and your favourite hero as inspiration, to make a piece of armour, or a mask to display.
6. **Recycled bug hotel-** Use materials in your recycling box to create a bug hotel.
7. **Pirate hats-** make a pirate hat out of paper which will fit your head.
8. **Tudor House Junk Model-** Use whatever you have lying around to create a model of a Tudor House. This should be no bigger than a shoe box.

Early Key stage 2- Years 3 & 4

9. **Your Favourite Animal Fact File Poster-** Tell us about your favourite animal. Let us know all about it- it can be anything from an exotic wild animal to a bug, or pet!
10. **Make a Greek Amphora-** This can be made from clay. Make it look beautiful by decorating it.
11. **Garden in a teacup-** Create a little paradise in a teacup. This could use natural materials or manmade structures to create a little garden scene.
12. **Model Of An Afternoon Tea-** use playdough, clay or fimo clay to create a delicious looking afternoon tea.
13. **Paint a Stone-** paint a little scene or a cheeky little character on a stone. Large or small, we don't mind.



**WANBOROUGH
SHOW SOCIETY**

"For Community & Local Heritage"
www.wanboroughshow.org

Children's Show

Class

Late Key Stage 2- years 5 & 6

14. **Pressed Flower Card**- Use pressed flowers from the garden to create an exciting and imaginative birthday card.
15. **Show Stopper Cake**- bake the judges something stunning- they will be cut into! Please remember to submit a recipe with the cake, this could be hand written or typed and printed.
16. **Solar System Models**- Use any materials to create a planet or solar system scene.
17. **Rainforest Picture**- Use any medium to create an image of your favorite rainforest animal in its natural habitat.
18. **River Poem**- Write a poem about a river or stream. This can be hand written or typed and printed. Make it look beautiful by illustrating it.

11+

19. **Creative Cookies**- Bake the judges a batch of 6 lovely cookies. These can be any flavor. Please submit a recipe with the cookies, this can be hand written or typed and printed.
20. **Crochet or Knitted animal**- Get creative by making a cheeky little animal friend using wool techniques such as knitting or crochet.
21. **Book Nook (Diarama Model)**- Use any materials to create a little scene from your favourite book. Entries should be no bigger than a shoe box.
22. **Origami creation**- Use your paper folding skills to make an interesting origami creation.
23. **Fashion Upcycle**- Upcycle an old piece of clothing into something new and exciting.

Under 18

24. **Funny photography**- Submit a photo to the judges that shows us something that makes you laugh. Photos must be printed, any size accepted.
25. **Handmade Bunting**- use anything you like to make a metre of beautiful bunting
26. **Creative writing, short story or poem, theme "Food Description"**- Use the theme to create a piece of writing that leaves the judges guessing until the very end!



Children's Show

Entry Form - FREE ENTRY

| Class No. | Exhibit Description |
|-----------|---------------------|
| | |
| | |
| | |
| | |
| | |
| | |
| | |

Name:

Age

Address:

Contact Number:

| Class No. | Exhibit Description |
|-----------|---------------------|
| | |
| | |
| | |
| | |
| | |
| | |
| | |

Name:

Age

Address:

Contact Number:

You can either Post entries to Beth to the following address:-
 28 Warneage Green, Wanborough
Or E-mail to:
 Any queries please contact - Beth Hoyer 07716344996
Deadline 8pm on Thursday 14th August 2025



**WANBOROUGH
SHOW SOCIETY**

“For Community & Local Heritage”
www.wanboroughshow.org

Main Arena



The Lamb National Sheep Race

1.30pm & 4.30pm

This event really is one for all the family as you watch the stars of track and field:

The hardy Herdwick sheep are in sheep shape and are a breed known for their agility as they originate from the challenging terrain of the Lake District in Cumbria, UK and need to be able to jump to negotiate natural hazards. In their individual colours, jumping over fences to complete the race.

The Lamb National provide an amusing commentary from the initial parade where the runners & riders are introduced with names such as 'Red Ram' and 'No Ewe Turns' and throughout the race describing each sheep's attempt to bleat the competition.



**WANBOROUGH
SHOW SOCIETY**



Main arena sponsored by:



Bob Hogs Sheepdog Show

1pm & 4pm

Bob Hogg has earned himself an excellent reputation for his professional and highly entertaining displays, in which the dogs work geese and ducks. The display is informative for the adults, as Bob shares his unique training methods and great fun for the children, as they are invited into the arena whilst the dogs work the ducks around an obstacle course, down a slide and into a pool.



**WANBOROUGH
SHOW SOCIETY**

"For Community & Local Heritage"
www.wanboroughshow.org

Main Arena

Mighty Smith Show

2.30pm & 5pm

Impressive feats of strength from one of the UK's Strongest Men



Adrian Smith, 5th in the World's Strongest Man and three times Winner of UK's Strongest Man Competition, presents a show geared for family fun with visual humour and audience participation. Tearing up catalogues, bending six inch nails in his teeth, walking on a bed of broken glass, holding a chair with a seated lady on it in his teeth, presenting a children's tug of war



**WANBOROUGH
SHOW SOCIETY**



Main arena sponsored by:



Main Arena

Razamatazz Children's Show 3pm



Pantasy Steel Band 12 noon



Morris Dancers 2pm



Beer Tent & Cafe

Relax and enjoy some refreshments in the Beer Tent & Café, while listening to Gilmore & Jaz.

There will be a bar serving alcoholic and soft drinks. In addition there will be café selling tea & coffee and cake.

There will be plenty of seating in the marquee, where you can enjoy your refreshments while listening to some music played by Gilmore & Jaz.



**WANBOROUGH
SHOW SOCIETY**

"For Community & Local Heritage"
www.wanboroughshow.org

Show Day Entertainment

Helta Skelter Inflatable Slide



FREE For All!!

(age restrictions
apply)

Sponsored by:



New for this year!

Get ready for a world of excitement with our captivating 10ft Platform Helter Skelter Slide! This exhilarating creation combines the nostalgia of a traditional helter skelter with a modern twist, making it a great attraction for all ages.

Children can embark on a thrilling journey as they climb to the top before swooshing down the curved slide that replicates the timeless fun of a classic helter skelter.



**WANBOROUGH
SHOW SOCIETY**

"For Community & Local Heritage"
www.wanboroughshow.org

Beautiful new **energy efficient** homes in Wanborough



Discover our 3 and 4 bedroom homes for sale at Redlands Grove in the picturesque Wiltshire village of Wanborough.

Enjoy living in a stunning countryside location, with the benefit of all the local amenities you could need including:

- Highly rated schooling
- Swindon rail station
- Shops & supermarkets
- Healthcare & leisure facilities
- Commuter links via A419 & M4
- Pubs, cafes & eateries

Ask about Home Exchange

We could be your guaranteed buyer at 100% market value*.



*Specific homes only. *Terms and conditions apply to purchase assistance schemes. Incentives available on selected plots only for a limited time and cannot be used in conjunction with any other offers, discount, promotion or scheme. All images are used for illustrative purposes and are representative. They may not be the same as the actual home you purchase, specification may differ and include optional upgrades and extras which involve an additional cost. Your home may be repossessed if you do not keep up repayments on a mortgage or any other debt secured on it. Subject to individual lender terms and conditions. Our usual reservation and sales terms and conditions also apply. Please speak to one of our sales consultants for more details. D514080

Redlands Grove, Wanborough

Redlands Way
SN3 0AE

Sales centre &
show homes open
Thursday - Monday
10am - 5pm

Contact us today
01793 352 762

Bovis Homes

bovishomes.co.uk



Show Day Entertainment

Climbing Wall

FREE For All!!

(age restrictions
apply)



Back for 2025 - Wanborough Show Climbing Wall

This year the Wanborough Show will have a 4 man, 7 meter, climbing wall which will be staffed by qualified guides throughout the day.

Come try it out!

Sponsored by:-

**Bovis
Homes**



**WANBOROUGH
SHOW SOCIETY**



Football Darts



FREE For All!!

New for 2025

Using Velcro footballs come and see the total you can score by aiming the football at the dart board.

Great fun for all.

Sponsored by:-



Wildlife Display



With a 'hands on' approach with a variety of animals, including Snakes, Spiders, Scorpions, Insects, Meerkats and cute and cuddles, Bryan and his qualified team provide interactive sessions throughout the day.



**WANBOROUGH
SHOW SOCIETY**

"For Community & Local Heritage"
www.wanboroughshow.org

Classic Vehicle Display 2025

Sponsored by:





Trade Stands

Enjoy wondering around and viewing the many trade stands we have this year.



"For Community & Local Heritage"
www.wanboroughshow.org

LES SMITH HAULAGE LTD

Delivered With Experience

For all your storage, haulage and distribution needs throughout mainland UK, we are happy to undertake short or long term contracts and we are always interested in full return loads to the Swindon Area.

45+ Years Experience

90% of our fleet are London compatible

Same, Next Day & Economical Delivery Options



www.lessmithhaulage.com | 01793 525789 | tony@lessmithhaulage.com

Summer Raffle - 2025

Raising funds for the Community
& Local heritage.



Wanborough Show Society would like to thank those who have donated prizes to the 2025 raffle

Raffle Prizes:-

-

Raffle Sponsored by:



Tickets can be purchased from local pubs and at the Show on 16th August, find us in front of the beer tent.

Raffle to be drawn at The New Calley Arms on Sunday 17th August at 15.00



**WANBOROUGH
SHOW SOCIETY**

"For Community & Local Heritage"
www.wanboroughshow.org

Thank you to our Summer Raffle Donors



**THE
NEW CALLEY
ARMS**



**WANBOROUGH
SHOW SOCIETY**



SPREAD THE COST...

Of your pets
ROUTINE HEALTHCARE
with
PETCLUB

**Affordable
monthly payments
with discounts
included**



Wroughton • Abbey Meads • Stratton
Ridgeway Farm • Royal Wootton Bassett • Marlborough

THE WANBOROUGH COMPANION DOG SHOW

(To be held under Kennel Club Regulations)

Enter on the Day

Saturday 16th August 2025

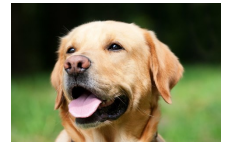
Church Meadow, Upper Wanborough SN4 0BZ



Judge: Charlotte Bell (Charakinha)

Pedigree Classes £2.50 per class

1. Any Variety Puppy 6-12months
2. Any Variety Sporting
3. Any Variety Non - Sporting
4. Any Variety Open.



Best pedigree dog in show will now be judged

Novelty Classes £2.50 per class

5. Best Veteran (over 7yrs)
6. Best Crossbreed
7. Junior Handling (6 - 16 yrs)
8. Prettiest Bitch
9. Best Rescue
10. Best Movement
11. Handsome Dog
12. Dog in Best Condition
13. Most Appealing Eyes
14. Dog the Judge would most like to take home



Entries from 12 noon on Saturday 16th August

Judging starts at 1pm

Enquiries: Ken Fry - Tel 07565919872

E-mail: Kenneth.fry1@gmail.com

Please note - No CC Winners - No Bitches in season - No reserve CC Winners - No Junior Warrant Winners (Pedigree classes only)



PUB FOOD AT IT'S BEST MUDDY BOOTS AND PAWS WELCOME

The Harrow Inn is a beautiful 17th century thatched pub that sits on the high street in Wanborough.

POOL TABLE & DART BOARD • BOARD GAMES CORNER
SHOWING ALL LIVE SPORTS • TNT SPORTS & SKY SPORTS
SEPARATE BAR AND RESTAURANT • OUTDOOR SCREENS
THREE GARDEN AREAS • BBQ • FREE PARKING
LIVE MUSIC MONTHLY • LATE NIGHT LICENSE

01793 956 486
Harrowinnswindon.co.uk

Harrow Inn, High St,
Wanborough, Swindon, SN4 0AE

Poplars Daycare
Nursery & Pre-School
QUALITY CHILDCARE

✿ AGES 3 MONTHS - 14 years

✿ STRONG LOCAL LINKS

✿ OFSTED RATED 'GOOD'

✿ EXTENSIVE OUTDOOR GROUNDS

✿ WELL LOCATED

✿ FLEXIBLE HOURS



LIMITED SPACES DUE TO HIGH DEMAND

**CONTACT US TO ARRANGE A VISIT AND SECURE A SPACE FOR
YOUR LITTLE ONE...**

WATBOROUGH ROAD | SWINDON | SN4 0AA

enquiries@poplars-nursery.co.uk | 01793 790774 | www.poplars-nursery.co.uk



Continued main sponsor of the
**WANBOROUGH VILLAGE
& COUNTRY SHOW**